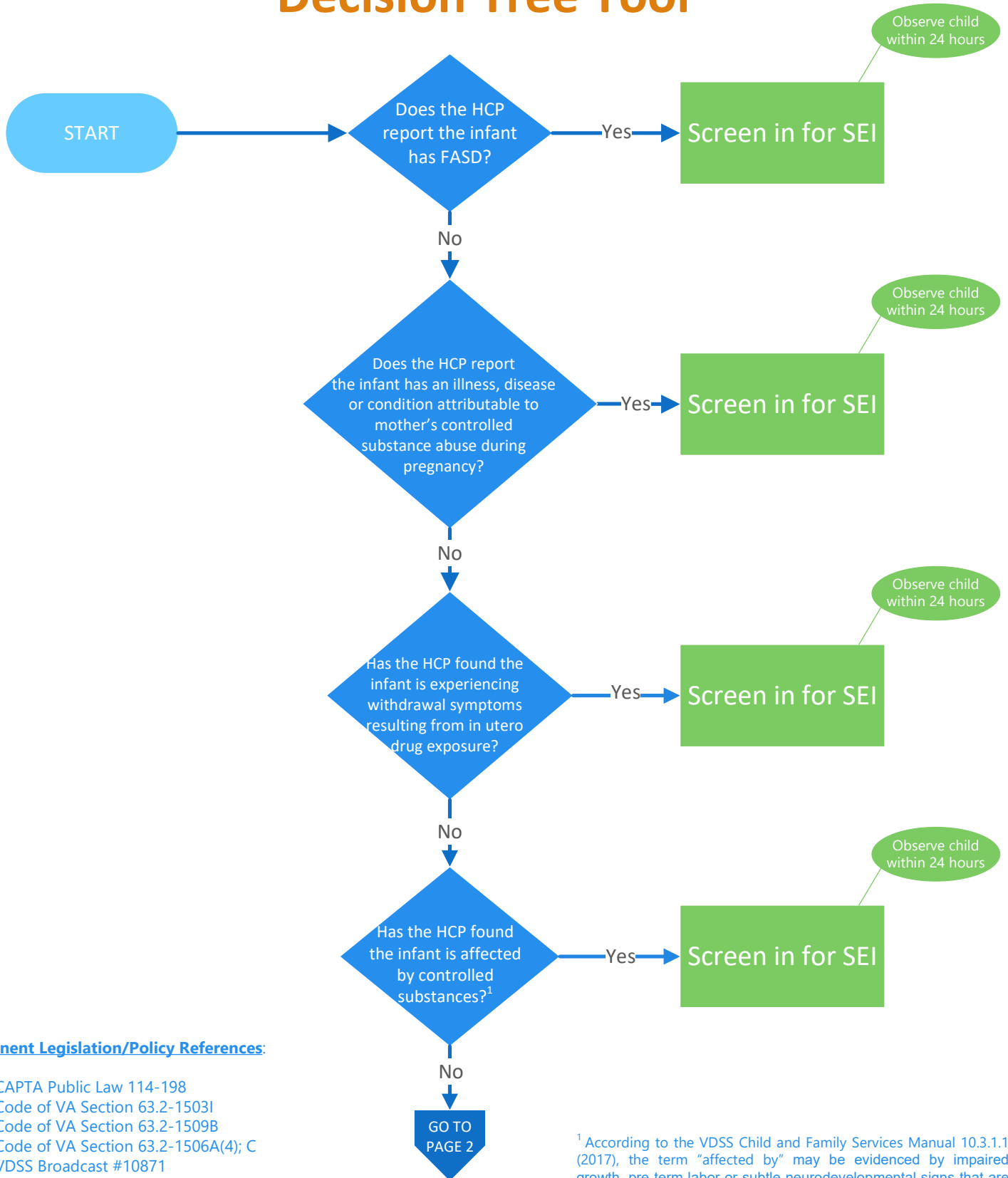


Substance-Exposed Infants (SEI) Decision Tree Tool



Pertinent Legislation/Policy References:

- CAPTA Public Law 114-198
- Code of VA Section 63.2-15031
- Code of VA Section 63.2-1509B
- Code of VA Section 63.2-1506A(4); C
- VDSS Broadcast #10871

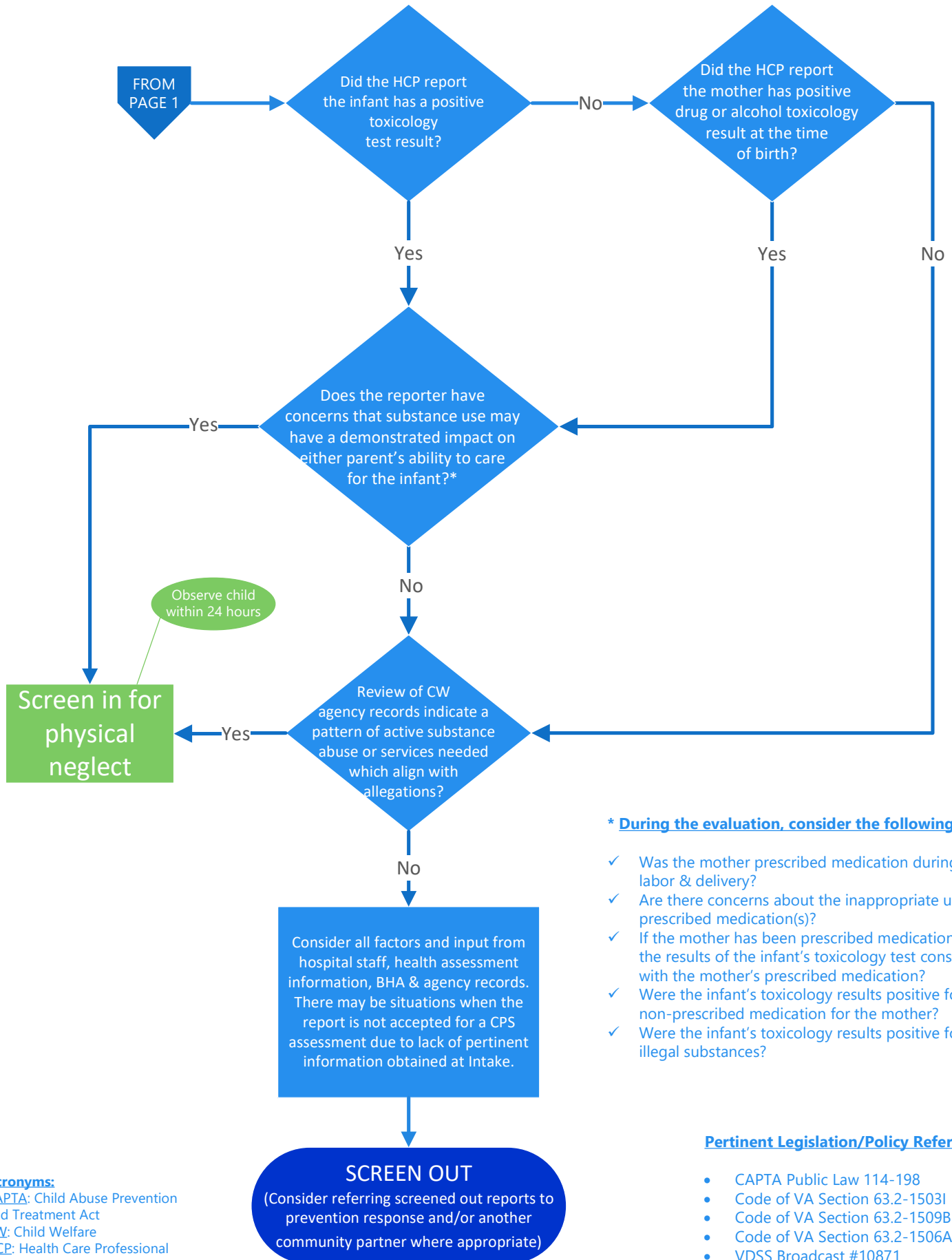
Acronyms:

FASD: Fetal Alcohol Spectrum Disorder
HCP: Health Care Professional

Rev Date: 7/19/18

¹ According to the VDSS Child and Family Services Manual 10.3.1.1 (2017), the term “affected by” may be evidenced by impaired growth, pre-term labor or subtle neurodevelopmental signs that are more difficult to define in the newborn and infancy stages. An alcohol or other drug affected infant is one in which there is detectable physical, developmental, cognitive or emotional delay or actual harm that is associated with parental substance use. The LDSS should collect and document how the child is affected by parental substance abuse.

SEI Decision Tree Tool (Page 2)



*** During the evaluation, consider the following:**

- ✓ Was the mother prescribed medication during labor & delivery?
- ✓ Are there concerns about the inappropriate use of prescribed medication(s)?
- ✓ If the mother has been prescribed medication, are the results of the infant's toxicology test consistent with the mother's prescribed medication?
- ✓ Were the infant's toxicology results positive for a non-prescribed medication for the mother?
- ✓ Were the infant's toxicology results positive for illegal substances?

Pertinent Legislation/Policy References:

- CAPTA Public Law 114-198
- Code of VA Section 63.2-1503I
- Code of VA Section 63.2-1509B
- Code of VA Section 63.2-1506A(4); C
- VDSS Broadcast #10871

Acronyms:

CAPTA: Child Abuse Prevention and Treatment Act
CW: Child Welfare
HCP: Health Care Professional