

DEPT. OF SOCIAL SERVICES-PAYMENTS AND AVERAGE GRANTS FOR WELFARE PROGRAMS

	JULY '12	JUNE '12	INC./DEC. PRI MON	% DIFF PRI MON	**YTD TOTAL	JULY '11	INC/DEC PRIOR YR.	% INC/DEC PRIOR YR.
AUXILIARY GRANTS PROGRAMS								
RECIPIENTS	4,862	4,520	342	8%	4,862	4,841	21	0%
PAYMENTS	\$1,937,799	\$1,663,803	\$273,996	16%	\$1,937,799	\$1,842,024	\$95,775	5%
AVERAGE GRANT	\$399	\$368	\$30	8%	\$399	\$381	\$18	5%
ADULT FAMILY CARE								
RECIPIENTS	36	36	0	0%	36	39	(3)	-8%
PAYMENTS	\$13,323	\$13,986	(\$662)	-5%	\$13,323	\$16,850	(\$3,526)	-21%
AVERAGE GRANT	\$370	\$388	(\$18)	-5%	\$370	\$432	(\$62)	-14%
TEMPORARY ASSISTANCE FOR NEEDY FAMILIES								
RECIPIENTS-TOTAL	73,033	73,620	(587)	-1%	73,033	80,478	(6,855)	-9%
TANF	66,444	66,915	(471)	-1%	66,444	72,639	(6,195)	-9%
TANF-UNEMPLOYED PARENTS	6,589	6,705	(116)	-2%	6,589	7,839	(1,250)	-16%
1/EMERGENCY ASSISTANCE	2	3	(1)	-33%	2	0	2	0%
PAYMENTS-TOTAL	\$8,903,104	\$8,958,427	(\$55,323)	-1%	\$8,903,104	\$9,772,945	(\$869,841)	-9%
TANF	\$8,224,928	\$8,274,158	(\$49,231)	-1%	\$8,224,928	\$8,953,115	(\$728,187)	-8%
TANF-UNEMPLOYED PARENTS	\$676,946	\$683,302	(\$6,356)	-1%	\$676,946	\$819,830	(\$142,884)	-17%
EMERGENCY ASSISTANCE	\$1,230	\$967	\$263	27%	\$1,230	\$0	\$1,230	0%
AVERAGE GRANT-TOTAL	\$122	\$122	\$0	0%	\$122	\$121	\$0	0%
AVERAGE MONEY PAYMENTS	\$124	\$124	\$0	0%	\$124	\$123	\$1	0%
AVERAGE TANF-UNEMPLOYED PARENTS	\$103	\$102	\$1	1%	\$103	\$105	(\$2)	-2%
AVERAGE EMERGENCY ASSISTANCE	\$615	\$322	\$293	91%	\$615	\$0	\$615	0%
TITLE IV-E								
ADOPTION SUBSIDY- RECIPIENTS	7,070	6,595	475	7%	7,070	5,886	1,184	20%
ADOPTION SUBSIDY - PAYMENTS	\$5,584,045	\$5,093,042	\$491,003	10%	\$5,584,045	\$4,060,665	\$1,523,380	38%
AVERAGE ADOPTION SUBSIDY	\$790	\$772	\$18	2%	\$790	\$690	\$100	14%
SPECIAL NEEDS ADOPTION								
SPECIAL NEEDS ADOPTION - RECIPIENTS	3,852	4,252	(400)	-9%	3,852	5,110	(1,258)	-25%
SPECIAL NEEDS ADOPTION - PAYMENTS	\$3,147,757	\$3,338,385	(\$190,628)	-6%	\$3,147,757	\$4,068,567	(\$920,809)	-23%
AVERAGE SPECIAL NEEDS ADOPTION	\$817	\$785	\$32	4%	\$817	\$796	\$21	3%
GENERAL RELIEF								
PAYMENTS-TOTAL	\$285,647	\$272,572	\$13,075	5%	\$285,647	\$278,185	\$7,463	3%

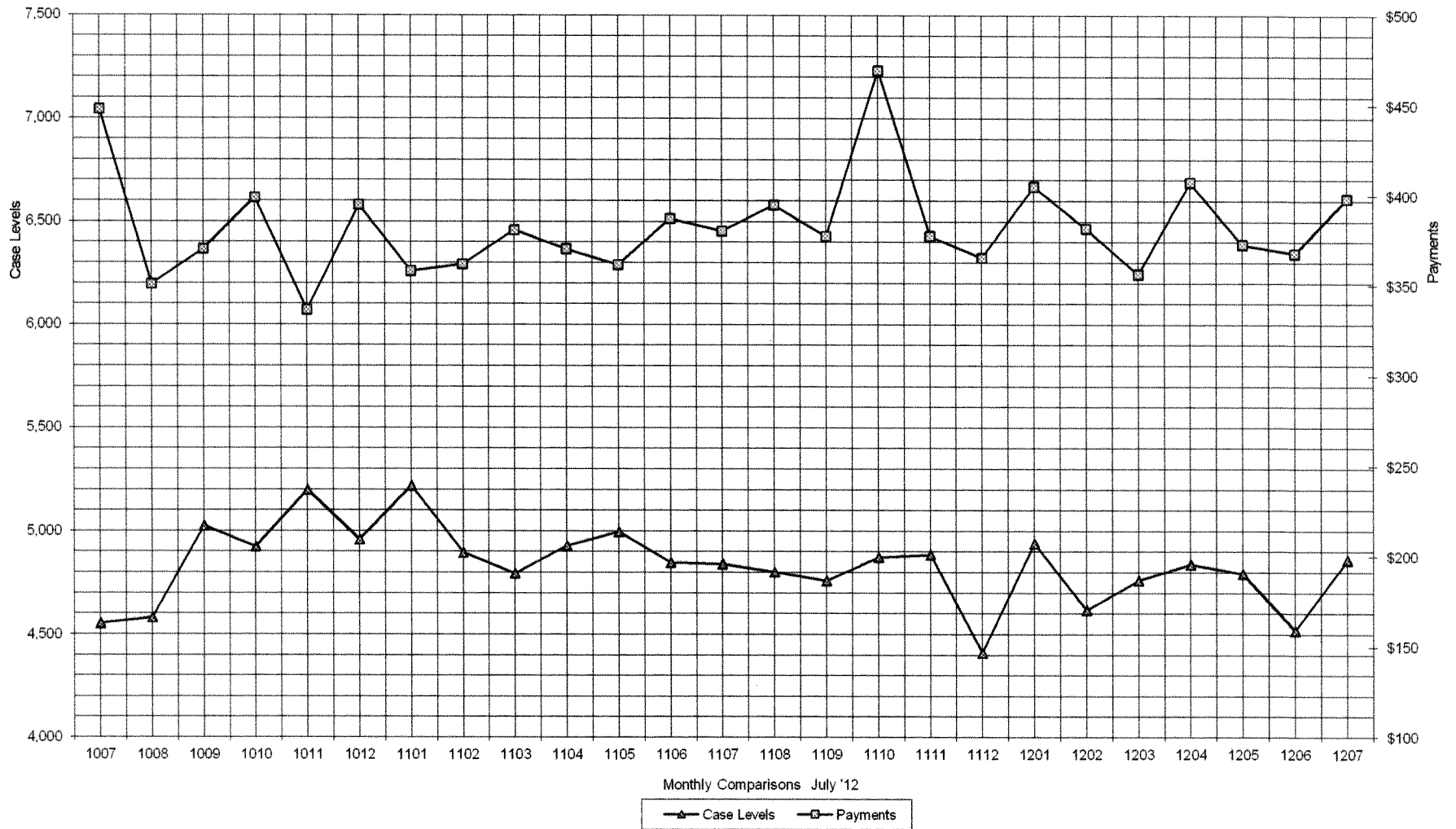
1/ INCLUDES 2 RECIPIENTS IN JULY AND 3 IN JUNE WHO ALSO REC'D MONEY PAYMENTS

** YEAR TO DATE TOTAL: THE RECIPIENT FIGURES DO NOT REPRESENT TRUE COUNTS AS THE RECIPIENTS ARE GENERALLY THE SAME EVERY MONTH. THE YEAR TO DATE DOLLAR FIGURES ARE ACCURATE.

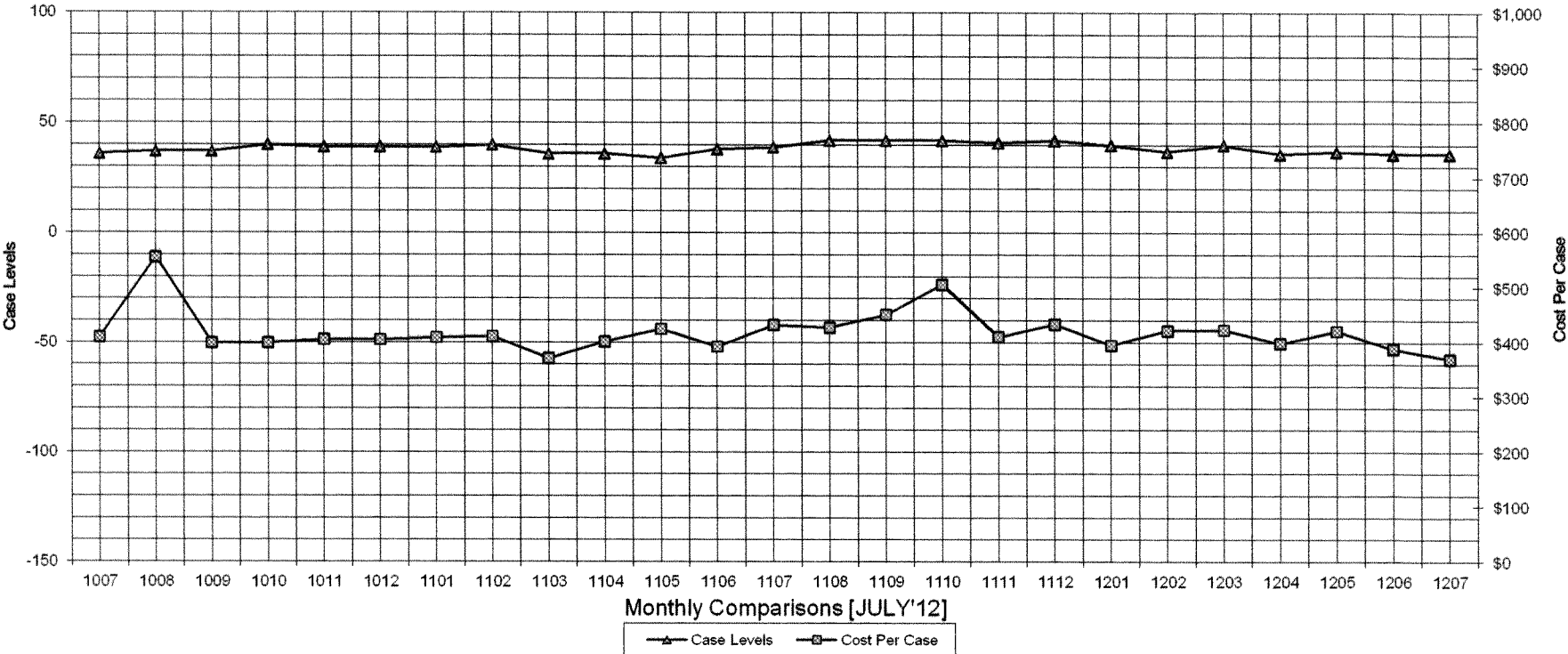
ARRA amounts are included in the payment amounts

General Disclaimer: Unless specifically stated otherwise, case count numbers indicated in this report(s) stem from amounts entered by local personnel into applicable ADAPT and LASER systems; therefore, all reviewers/users of this report understand that the accuracy of such case count numbers is contingent on the respective numbers entered by local personnel. Any subsequent liabilities associated with incorrect amounts being entered into the noted systems rests solely with each locality Effective March 2008 a difference method of calculating TANF & TANF-UP information was established.

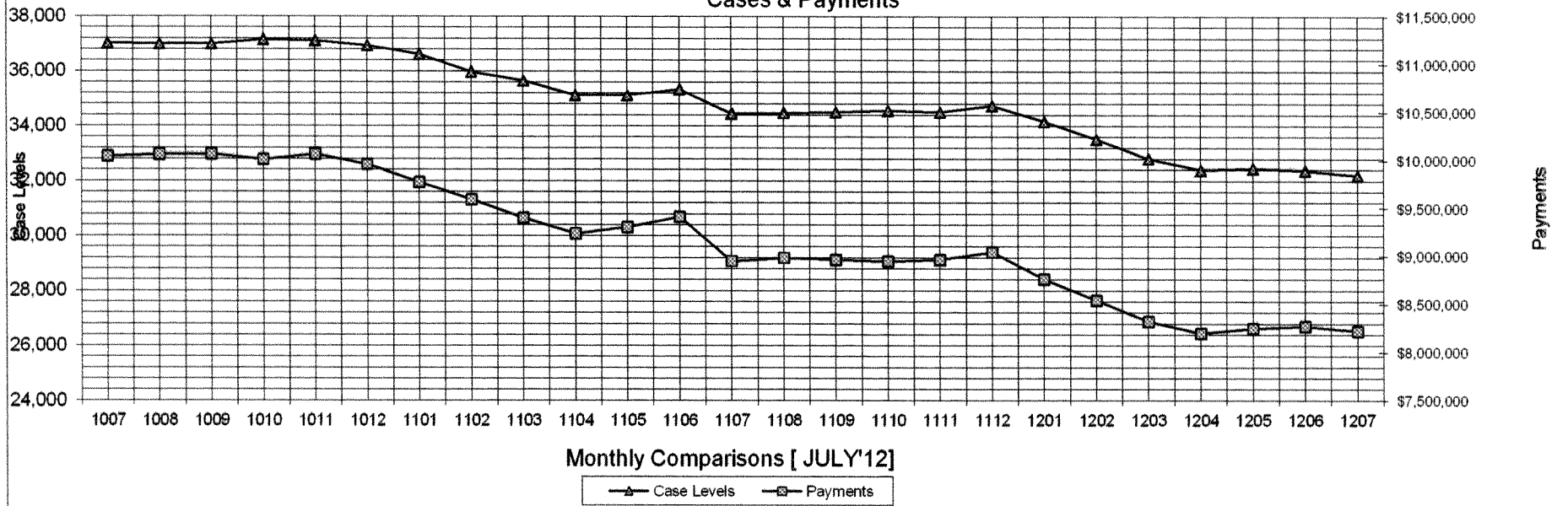
Auxiliary Grants Programs Cases & Payments



Adult Family Care
Cases vs Cost-Per-Case



TANF Cases & Payments



GENERAL RELIEF
Payments

